



### Electric Warming Lamp

|                |                 |                 |                  |
|----------------|-----------------|-----------------|------------------|
| Model          | GR-1H           | GR-2H           | GR-3H            |
| Lamp           | 1               | 2               | 3                |
| Power(kw)      | 0.65            | 1               | 1.4              |
| Voltage(V)     | 220             | 220V            | 220V             |
| Dimensions(mm) | 550 x 370 x 700 | 780 x 530 x 700 | 1070 x 530 x 700 |



★ Two knobs independently control the transmission speed of the chain and the temperature of the upper and lower heating element.



### Electric Conveyor Toaster

|                              |                 |                 |                 |
|------------------------------|-----------------|-----------------|-----------------|
| Model                        | GR-150T         | GR-300T         | GR-450T         |
| N/W(kg)                      | 14              | 16              | 20.5            |
| Power(KW)                    | 1.34            | 1.94            | 2.64            |
| Voltage(V)                   | 220             | 220             | 220             |
| Dimensions(mm)               | 418 x 288 x 387 | 418 x 368 x 387 | 418 x 468 x 387 |
| Capacity (Pieces of bread/H) | 150-180         | 300-350         | 450-500         |

### Electric Toaster(4-slice)

|                |                 |
|----------------|-----------------|
| Model          | GR-DS4          |
| N/W(kg)        | 6               |
| Power(KW)      | 1.9             |
| Voltage        | 220V            |
| Dimensions(mm) | 370 x 210 x 225 |

### Electric Toaster(6-slice)

|                |                 |
|----------------|-----------------|
| Model          | GR-DS6          |
| N/W(kg)        | 7               |
| Power(KW)      | 2.5             |
| Voltage        | 220V            |
| Dimensions(mm) | 460 x 210 x 225 |



### Food Warmer Cart(1-Door)

|                  |                  |
|------------------|------------------|
| Model            | GR-11-21         |
| N/W(kg)          | 182              |
| Power(kw)        | 3                |
| Capacity         | 11Layers         |
| Voltage(V)       | 220-240          |
| Bore size(L/H/D) | 540 x 680 x 1380 |
| Dimensions(mm)   | 790 x 975 x 1795 |



### Food Warmer Cart(2-Door)

|                  |                   |
|------------------|-------------------|
| Model            | GR-22-21          |
| N/W(kg)          | 320               |
| Power(kw)        | 3                 |
| Capacity         | 22 Layers         |
| Voltage(V)       | 220-240           |
| Bore size(L/H/D) | 1350 x 680 x 1380 |
| Dimensions(mm)   | 1540 x 940 x 1795 |

★ This warmer cart adopts technique of hot air convection and the mode of fan air heating, thus achieving rapid rise in temperature and balanced heating. Furthermore a basin is placed at its bottom. A natural evaporation way is used to keep a digital temperature of the food.

★ This warmer cart is equipped with a digital temperature controller, which is able to keep constant temperature inside the cabinet and achieve random monitoring. It is applicable to be used at the locations such as supermarket, fast can be kept inside the warmer cart to keep constant temperature, thus reducing the pressure of the customers during rush hours.

★ Stainless steel design, elegant appearance and easy to clean; Adopt convection heating mode; Achieve balanced temperature, keep constant humidity and the temperature is adjustable; Able to prolong the storage time for fresh food; Large capacity and low energy consumption; Safe transportation.



### Insects Killer

|        |                |       |                |
|--------|----------------|-------|----------------|
| Model  | Light Resource | Power | Dimensions(mm) |
| MQ-20W | UV             | 2x10w | 390x100x280    |
| MQ-30W | UV             | 2x15w | 495x100x300    |
| MQ-40W | UV             | 2x20w | 645x100x320    |



### Induction Cooker

|                |           |
|----------------|-----------|
| Model          | IDC-122   |
| Power(w)       | 2000      |
| Voltage        | 220V/50Hz |
| Dimensions(mm) | 280 x 360 |



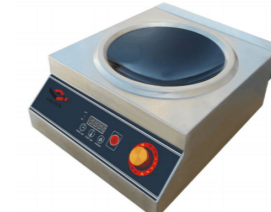
### Induction Cooker

|                |                |
|----------------|----------------|
| Model          | IDC-222        |
| Power(w)       | 2200/2200      |
| Voltage        | 220V/50Hz      |
| Dimensions(mm) | 680 x 380 x 78 |



### Commercial Induction Cooker

|                |                 |
|----------------|-----------------|
| Model          | IDC-501P        |
| Power(w)       | 5000            |
| Voltage        | 220V/50Hz       |
| Dimensions(mm) | 510 x 405 x 195 |



### Commercial Induction Cooker

|                |                 |
|----------------|-----------------|
| Model          | IDC-501A        |
| Power(w)       | 5000            |
| Voltage        | 220V/50Hz       |
| Dimensions(mm) | 510 x 405 x 195 |



### Single Burner Induction Soup Cooker

|                |                     |                     |                     |
|----------------|---------------------|---------------------|---------------------|
| Model          | GR-8BT              | GR-12BT             | GR-15BT             |
| Power(kw)      | 8                   | 12                  | 15                  |
| Voltage        | 380V/50Hz           | 380V/50Hz           | 380V/50Hz           |
| Dimensions(mm) | 650 x 750 (500+700) | 650 x 750 (500+700) | 650 x 750 (500+700) |



### Gas BBQ Grill

|                |                               |
|----------------|-------------------------------|
| Model          | GR-K12                        |
| Prssure        | 2800pa                        |
| Power(W)       | 32                            |
| N/W(kg)        | 15                            |
| Dimensions(mm) | 1200 x 370x230/1200 x 370x230 |



### Lamb Grill

|                  |                |
|------------------|----------------|
| Model            | GR-L114        |
| N/W(kg)          | 36             |
| G/W(kg)          | 38             |
| Packing Size(mm) | 1260 x 600x950 |



### Gas BBQ Grill

|                |                |
|----------------|----------------|
| Model          | GR-BBQ01       |
| Power(w)       | 20             |
| N/W(kg)        | 60             |
| Voltage        | 220V           |
| Dimensions(mm) | 1135 x 620x920 |



### Soybean Grinder

|                |                 |
|----------------|-----------------|
| Model          | GR-06           |
| Power(kw)      | 1.1             |
| Voltage        | 220V/50Hz       |
| Output(kg/h)   | 60              |
| Dimensions(mm) | 300 x 500 x 750 |



### Roast Duck Oven

|                |                |
|----------------|----------------|
| Model          | DO-801         |
| Power(kw)      | 1              |
| Capacity(L)    | 20             |
| Dimensions(mm) | Φ80/90 x 135cm |



### Electric Pancake Maker

|                |                 |
|----------------|-----------------|
| Model          | CM-FT           |
| N/W(kg)        | 39              |
| Power(kw)      | 5               |
| Voltage        | 220V/50Hz       |
| Temperature    | 50-250°C        |
| Dimensions(mm) | 840 x 810 x 820 |



### Chicken Feather Remover

|                |                 |
|----------------|-----------------|
| Model          | GR-SX60         |
| N/W(kg)        | 60              |
| Voltage(V)     | 220/50Hz        |
| Power(kw)      | 1.1             |
| Dimensions(mm) | 620 x 620 x 930 |



- ★ Transmission speed(washing speed)can be adjusted easily and conveniently.
- ★ The transmission direction (in and out)can be adjusted freely and swiftly;the LCD screen which shows the working conditions can be operated easily.
- ★ The outer shell is mounted through slotting and hanging craft,which makes it easy to be disassembled quickly.

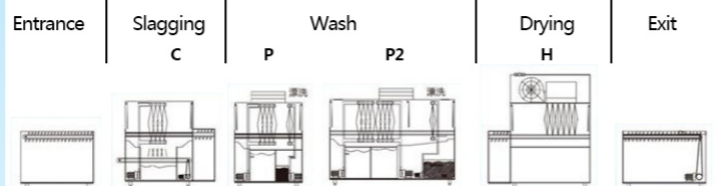


- ★ Suitable for small restaurants, bars, cafes, etc.
- ★ Efficient and energy-saving, high-power main washing pump cleans more thoroughly, the rinsing temperature is as high as 82 ~ 95°C.
- ★ Ensuring the washing effect, saving space.Increase efficiency, reduce the rate of human dishwash damage, reduce the cost of catering meals.
- ★ Equipped with built-in intelligent distributor.

### Electric Dishwasher

|                          |                   |
|--------------------------|-------------------|
| Model                    | GR-L280P          |
| Operation Capacity(seat) | 500-600           |
| Dishes per hour(set)     | 2800-4200         |
| N/W(kg)                  | 330               |
| Dimensions(mm)           | 2800 × 850 × 1600 |

### Product Features



### Electric Dishwasher

|                          |                   |
|--------------------------|-------------------|
| Model                    | GR-60H-A          |
| Voltage(V)               | 220V/380V         |
| Power(kw)                | 6.5kw/13.8kw      |
| Water Consumption(L/h)   | 96-120L/h         |
| Operation Capacity(seat) | 100-200           |
| N/W(kg)                  | 107               |
| Dimensions(mm)           | 1304 × 795 × 1637 |



### Exit Table

|                |                 |                  |
|----------------|-----------------|------------------|
| Model          | GR-2AP-70       | GR-2AP-120       |
| N/W(kg)        | 15              | 17               |
| Dimensions(mm) | 700 × 740 × 860 | 1200 × 740 × 860 |



### Pre- Cleaning Table(Right)

|                |                  |
|----------------|------------------|
| Model          | GR-2AP           |
| N/W(kg)        | 27               |
| Dimensions(mm) | 1200 × 740 × 860 |

# Chinese Cooking Range & Stainless Steel Products







**1 Burner Stove**

|                      |                    |                    |
|----------------------|--------------------|--------------------|
| Model                | BG-1001            | BG-1101            |
| Power                | 250W/220V          | 250W/220V          |
| Wok Diameter         | 800                | 900                |
| N/W(kg)              | 200                | 220                |
| CBM(m <sup>3</sup> ) | 1.13               | 1.35               |
| Dimensions(mm)       | 1000 x 1150 x 1150 | 1100 x 1200 x 1150 |



**Rice Noodle Roll Stove**

|                      |                    |
|----------------------|--------------------|
| Model                | BG-F1200AG         |
| Power                | 250W/220V          |
| N/W(kg)              | 300                |
| CBM(m <sup>3</sup> ) | 1.48               |
| Dimensions(mm)       | 1200 x 1150 x 1250 |



**1 Burner Steamer**

|                      |                  |                   |
|----------------------|------------------|-------------------|
| Model                | BG-1Z001         | BG-2Z001          |
| Power                | 250W/220V        | 250W/220V         |
| N/W(kg)              | 190              | 340               |
| CBM(m <sup>3</sup> ) | 1                | 1.84              |
| Dimensions(mm)       | 900 x 950 x 1150 | 1800 x 950 x 1150 |



**Chinese Cooking Range 1 Burner With Warmer**

|                      |                   |
|----------------------|-------------------|
| Model                | BG-1011           |
| Power                | 250W/220V         |
| N/W(kg)              | 180               |
| CBM(m <sup>3</sup> ) | 0.81              |
| Dimensions(mm)       | 1050 x 950 x 1150 |



**Chinese Cooking Range (2 Burners & 1 Warmer)**

|                      |                   |
|----------------------|-------------------|
| Model                | BG-1022           |
| Power                | 250W/220V         |
| N/W(kg)              | 280               |
| CBM(m <sup>3</sup> ) | 1.43              |
| Dimensions(mm)       | 1800 x 950 x 1150 |



**Chinese Cooking Range (2 Burners & 2 Warmers)**

|                      |                   |
|----------------------|-------------------|
| Model                | BG-2022           |
| Power                | 250W/220V         |
| N/W(kg)              | 320               |
| CBM(m <sup>3</sup> ) | 1.51              |
| Dimensions(mm)       | 2000 x 950 x 1150 |



**Single Burner Steamer**

|                |                         |
|----------------|-------------------------|
| Model          | BE-1100                 |
| Diameter(mm)   | 800                     |
| Power(KW)      | 20                      |
| Voltage        | 380V/50Hz               |
| Dimensions(mm) | 1100 x 1150 x (800+350) |



**1 Wok Burner with Warmer**

|                |                         |
|----------------|-------------------------|
| Model          | BE-1010                 |
| Diameter(mm)   | 400                     |
| Power(KW)      | 12                      |
| Voltage        | 380V/50Hz               |
| Dimensions(mm) | 1200 x 1000 x (800+450) |



**2 Wok Burner with Warmer**

|                |                         |
|----------------|-------------------------|
| Model          | BE-1020                 |
| Diameter(mm)   | 400                     |
| Power(KW)      | 12 x 2                  |
| Voltage        | 380V/50Hz               |
| Dimensions(mm) | 2000 x 1000 x (800+350) |



**Electric Rice Steamer**

|                |                 |
|----------------|-----------------|
| Model          | SY-B-6P         |
| Power(KW)      | 8/9             |
| Air switch     | 63A/32A         |
| Dimensions(mm) | 710 x 630 x 960 |



**Electric Rice Steamer**

|                |                  |
|----------------|------------------|
| Model          | SY-B-12P         |
| Power(KW)      | 12               |
| Air switch     | 63A              |
| Dimensions(mm) | 710 x 630 x 1440 |



**Electric Rice Steamer**

|                |                   |
|----------------|-------------------|
| Model          | SY-B-24P          |
| Power(KW)      | 24                |
| Air switch     | 80A               |
| Dimensions(mm) | 1430 x 630 x 1440 |



**Gas Rice Steamer**

|                |                  |
|----------------|------------------|
| Model          | SYX20-6          |
| Steam Pressure | 2800pa           |
| Consume(kg/h)  | 1.6              |
| Dimensions(mm) | 690 x 670 x 1232 |



**Gas Rice Steamer**

|                |                  |
|----------------|------------------|
| Model          | SYX20-12         |
| Steam Pressure | 2800pa           |
| Consume(kg/h)  | 1.6              |
| Dimensions(mm) | 690 x 670 x 1715 |



**Gas Rice Steamer**

|                |                   |
|----------------|-------------------|
| Model          | SYX20-24          |
| Steam Pressure | 2800pa            |
| Consume(kg/h)  | 1.6x2             |
| Dimensions(mm) | 1410 x 670 x 1715 |



**Electric Boiler**

|                |                 |                  |
|----------------|-----------------|------------------|
| Model          | GR-DTT5060      | GR-DTT8080       |
| Power(kw)      | 8/9             | 18               |
| Voltage(V)     | 220/380         | 380              |
| Volume(L)      | 118             | 400              |
| Dimensions(mm) | 540 x 540 x 940 | 840 x 840 x 1140 |



**Energy-Saving Gas Steamer**

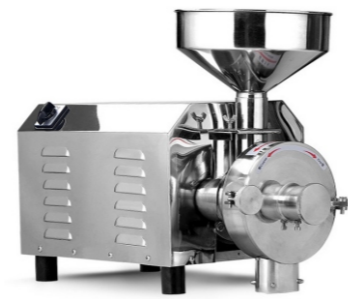
|                 |                 |
|-----------------|-----------------|
| Model           | GR-4E           |
| N/W(kg)         | 27.5            |
| Steam Pressure  | 2800Pa          |
| Consume(kg/h)   | 0.95            |
| Heat Load(MJ/h) | 43.8            |
| Voltage(V)      | 220             |
| Dimensions(mm)  | 655 x 720 x 915 |



**3-Door Seafood Steaming Cabinet**

|                      |                   |
|----------------------|-------------------|
| Model                | GR-3SC            |
| N/W(kg)              | 280               |
| CBM(m <sup>3</sup> ) | 1.84              |
| Power(W)             | 250               |
| Voltage(V)           | 220               |
| Dimensions(mm)       | 1000 x 800 x 1800 |





### Spice Grinder

| Model   | Power(W) | Voltage(V) | Dimensions(mm)  |
|---------|----------|------------|-----------------|
| SG-322  | 1500     | 110-240    | 190 x 190 x 330 |
| SG-522  | 2000     | 110-240    | 220 x 220 x 400 |
| SG-1022 | 3000     | 110-240    | 240 x 240 x 420 |
| SG-2022 | 4000     | 110-240    | 280 x 280 x 450 |

### Grinder

|                |                 |
|----------------|-----------------|
| Model          | SG-5022         |
| N/W(kg)        | 42              |
| Power(W)       | 2200            |
| Voltage        | 220V/50Hz       |
| Dimensions(mm) | 670 x 300 x 300 |

### The Vegetable Machine With 5 Knives



### Multi-Function Vegetable Cutter

|                |                 |
|----------------|-----------------|
| Model          | HLC-300         |
| N/W(kg)        | 23              |
| Voltage(V)     | 220/50Hz        |
| Dimensions(mm) | 565 x 295 x 565 |

High-grade stainless steel material pail elaborately. It has huge capacity and could be used safely and according with food hygiene requirements. The cover of material pail with perspective window is easy to control the cutting period for the operator.



### Universal Fritter Series

| Model            | QS503A          | QS505A          | QS508A          | QS513           | QS515           |
|------------------|-----------------|-----------------|-----------------|-----------------|-----------------|
| N/W(kg)          | 32              | 39              | 56              | 140             | 143             |
| Voltage          | 220V/50Hz       | 220V/50Hz       | 220-380V/50Hz   | 220-380V/50Hz   | 220V/50Hz       |
| Power(kw)        | 0.65            | 1.5             | 1.5             | 5.2             | 5.2             |
| Bowl Capacity(L) | 3               | 5               | 8               | 13              | 15              |
| Dimensions(mm)   | 230 x 300 x 480 | 305 x 380 x 530 | 370 x 445 x 615 | 420 x 680 x 720 | 420 x 680 x 770 |



B10



B20



B30



B40



B50

| Model  | Bowl Volume | Voltage        | Power  | Mixing Speed(r/min) | Kneading Capacity | Weight | Dimensions         |
|--------|-------------|----------------|--------|---------------------|-------------------|--------|--------------------|
| GR-B10 | 10L         | 220V/50Hz      | 0.37KW | 189/362             | 1kg               | 70kg   | 420 x 380 x 750mm  |
| GR-B20 | 20L         | 220V-380V/50Hz | 0.75KW | 113/168/400         | 6kg               | 98kg   | 415 x 530 x 780mm  |
| GR-B30 | 30L         | 220V-380V/50Hz | 1.5KW  | 65/102/294          | 10kg              | 192kg  | 610 x 530 x 1020mm |
| GR-B40 | 40L         | 380V/50Hz      | 1.5KW  | 96/168/306          | 12kg              | 248kg  | 590 x 580 x 1230mm |
| GR-B50 | 50L         | 380V/50Hz      | 1.5KW  | 84/163/373          | 15kg              | 242kg  | 760 x 580 x 1230mm |



### Three Function Mixer

|                |                 |
|----------------|-----------------|
| Model          | GR-B7           |
| N/W(kg)        | 25              |
| Voltage        | 220V/50Hz       |
| Power(kw)      | 1.5             |
| Capacity(L)    | 7               |
| Dimensions(mm) | 430 x 300 x 485 |



### Double Speed & Double Action Dough Mixer

| Model             | GR-20L          | GR-30L           | GR-40L           |
|-------------------|-----------------|------------------|------------------|
| N/W(kg)           | 90              | 98               | 110              |
| Voltage           | 220V/50Hz       | 220V/50Hz        | 380V/50Hz        |
| Power(kw)         | 1.1             | 1.5              | 2.2              |
| Bowl Capacity (L) | 20              | 30               | 40               |
| Dimensions(mm)    | 400 x 730 x 900 | 450 x 800 x 1000 | 470 x 850 x 1100 |



### Dough Presser & Noodle Cutter

|                           |                 |
|---------------------------|-----------------|
| Model                     | GR-25A          |
| N/W(kg)                   | 80              |
| Power(kw)                 | 1.1             |
| Voltage(V)                | 220/380         |
| Rotational Speed(RPM)     | 60r/m           |
| Length                    | 180             |
| Diameter(mm)              | Φ87             |
| Working Efficiency (kg/h) | 20-25           |
| May Adjust Thickness(mm)  | 1-8             |
| Dimensions(mm)            | 400 x 350 x 860 |



### Dough Presser & Noodle Cutter

|                           |                 |
|---------------------------|-----------------|
| Model                     | GR-40A          |
| N/W(kg)                   | 75              |
| Power(kw)                 | 1.1             |
| Voltage(V)                | 220/380         |
| Rotational Speed(RPM)     | 45r/m           |
| Length                    | 180             |
| Diameter(mm)              | Φ87             |
| Working Efficiency (kg/h) | 20-30           |
| May Adjust Thickness(mm)  | 1-8             |
| Dimensions(mm)            | 400 x 400 x 860 |



### Luxury Dough Mixer

| Model          | GR-25LDM        | GR-50LDM        |
|----------------|-----------------|-----------------|
| N/W(kg)        | 85              | 140             |
| Power(kw)      | 1.5             | 2.2             |
| Voltage(V)     | 220-380         | 220-380         |
| Diameter       | 5-10            | 5-10            |
| Capacity(L)    | 25              | 50              |
| Dimensions(mm) | 770 x 610 x 780 | 930 x 730 x 980 |



### Dough Presser & Noodle Cutter

|                          |                  |
|--------------------------|------------------|
| Model                    | GR-75A           |
| N/W(kg)                  | 140              |
| Power(kw)                | 1.5              |
| Voltage(V)               | 220/380          |
| Rotational Speed(RPM)    | 50r/m            |
| Length                   | 250              |
| Diameter(mm)             | Φ125             |
| Output                   | 75kg/h           |
| May Adjust Thickness(mm) | 1-12             |
| Dimensions(mm)           | 520 x 620 x 1150 |





### Meat Mincer

|                    |                 |                 |
|--------------------|-----------------|-----------------|
| Model              | GR-TC12         | GR-JR22         |
| N/W(kg)            | 25              | 28              |
| Voltage(V/50Hz)    | 220/50Hz        | 220/50Hz        |
| Power(kw)          | 0.8             | 1.1             |
| Productivity(kg/h) | 120             | 220             |
| Dimensions(mm)     | 370 x 190 x 410 | 430 x 220 x 420 |

### Meat Mincer

|                    |                 |                 |
|--------------------|-----------------|-----------------|
| Model              | GR-PC12         | GR-PC22         |
| N/W(kg)            | 20              | 22              |
| Voltage(V/50Hz)    | 220/50Hz        | 220/50Hz        |
| Power(kw)          | 0.8             | 1.1             |
| Productivity(kg/h) | 150             | 180             |
| Dimensions(mm)     | 200 x 270 x 390 | 200 x 270 x 400 |

### Meat Mincer

|                    |                 |
|--------------------|-----------------|
| Model              | GR-T42          |
| N/W(kg)            | 113             |
| Voltage(V/50Hz)    | 380/50Hz        |
| Power(kw)          | 3               |
| Productivity(kg/h) | 600             |
| Dimensions(mm)     | 860 x 550 x 960 |



### Semi-Automatic Meat Slicer

|                       |                 |
|-----------------------|-----------------|
| Model                 | GR-A10          |
| Voltage               | 220-240V/50Hz   |
| Power(kw)             | 0.32            |
| Blade Diameter        | 250mm/10inch    |
| Cutting Thickness(mm) | 0-10            |
| Dimensions(mm)        | 490 x 390 x 380 |

### Semi-Automatic Meat Slicer

|                       |                 |
|-----------------------|-----------------|
| Model                 | GR-A12          |
| Voltage               | 220-240V/50Hz   |
| Power(kw)             | 0.42            |
| Blade Diameter        | 300mm/12inch    |
| Cutting Thickness(mm) | 0-15            |
| Dimensions(mm)        | 530 x 460 x 460 |



### Automatic Meat Slicer

|                       |                 |
|-----------------------|-----------------|
| Model                 | GR-A3000-1      |
| Voltage               | 220-240V/50Hz   |
| Power(kw)             | 0.42            |
| Blade Diameter        | 300mm/12inch    |
| Slicing Speed         | 37times/min     |
| Cutting Thickness(mm) | 0-15            |
| Dimensions(mm)        | 650 x 600 x 750 |



### Bone Saw

|                      |                 |
|----------------------|-----------------|
| Model                | GR-1650A        |
| N/W(kg)              | 37.64           |
| Voltage              | 230V/50Hz       |
| Power(W)             | 750W            |
| Saw Wheel Length(mm) | 1650mm          |
| Packing Size(mm)     | 540 x 520 x 990 |



### Meat Mincer and Slicer

|                      |                 |
|----------------------|-----------------|
| Model                | JQ-1            |
| Nw(kg)               | 78              |
| Rate Frequency       | 50Hz            |
| Power(kw)            | 0.75            |
| Rate Power Input(kw) | 1.1             |
| Productivity(kg/h)   | 200-300         |
| Thickness(mm)        | 3.5             |
| Dimensions(mm)       | 510 x 410 x 800 |



### Sausage Filler

| Model | Size              | Cubage(L) | N/W(kg) |
|-------|-------------------|-----------|---------|
| SV-3L | 540 x 320 x 290mm | 3         | 13      |
| SV-5L | 690 x 320 x 290mm | 5         | 14      |
| SV-7L | 850 x 320 x 290mm | 7         | 16      |



### Meat Cutter

|                      |                 |
|----------------------|-----------------|
| Model                | DQ-1            |
| Nw(kg)               | 51              |
| Rate Frequency       | 50Hz            |
| Power(kw)            | 0.75            |
| Productivity(kg/h)   | 300             |
| Slices Thickness(mm) | 3.5             |
| Dimensions(mm)       | 380 x 335 x 585 |



### Potato Peeler

| Model          | GR-8            | GR-15           |
|----------------|-----------------|-----------------|
| N/W(kg)        | 42              | 67              |
| Voltage(V)     | 220             | 220             |
| Power(kw)      | 0.37            | 0.75            |
| Capacity(kg)   | 8               | 15              |
| Dimensions(mm) | 430 x 430 x 725 | 475 x 540 x 785 |



### Classic Electric Oven

|                 |                 |
|-----------------|-----------------|
| Model           | GR-101D         |
| Voltage(V)      | 220             |
| Capacity        | 1-deck /1-tray  |
| Power(kw)       | 4.4             |
| Temperature(°C) | 30-350          |
| Dimensions(mm)  | 920 x 640 x 410 |



### Classic Electric Oven

|                 |                 |
|-----------------|-----------------|
| Model           | GR-202D         |
| Voltage(V)      | 220             |
| Capacity        | 2-deck /2-tray  |
| Power(kw)       | 8.8             |
| Temperature(°C) | 30-350          |
| Dimensions(mm)  | 920 x 640 x 800 |



### Classic Electric Oven

|                 |                  |
|-----------------|------------------|
| Model           | GR-303D          |
| Voltage(V)      | 380              |
| Capacity        | 3-deck /3-tray   |
| Power(kw)       | 13.2             |
| Temperature(°C) | 30-350           |
| Dimensions(mm)  | 920 x 640 x 1100 |



### Electric Oven

|                 |                  |
|-----------------|------------------|
| Model           | GR-102D          |
| Voltage(V)      | 220/380          |
| Capacity        | 1-deck /2-tray   |
| Power(kw)       | 6.6              |
| Temperature(°C) | 30-400           |
| Dimensions(mm)  | 1220 x 850 x 580 |



### Electric Oven

|                 |                   |
|-----------------|-------------------|
| Model           | GR-204D           |
| Voltage(V)      | 380               |
| Capacity        | 2-deck /4-tray    |
| Power(kw)       | 13.2              |
| Temperature(°C) | 30-400            |
| Dimensions(mm)  | 1220 x 850 x 1240 |



### Electric Oven

|                 |                   |
|-----------------|-------------------|
| Model           | GR-306D           |
| Voltage(V)      | 380               |
| Capacity        | 3-deck /6-tray    |
| Power(kw)       | 19.8              |
| Temperature(°C) | 30-400            |
| Dimensions(mm)  | 1220 x 850 x 1700 |



### Gas Oven

|                 |                  |
|-----------------|------------------|
| Model           | GR-102Q          |
| Capacity        | 1-deck /2-tray   |
| Volts(V)        | 220              |
| Temperature(°C) | 30-400           |
| Dimensions(mm)  | 1340 x 890 x 680 |



### Gas Oven

|                 |                   |
|-----------------|-------------------|
| Model           | GR-204Q           |
| Capacity        | 2-deck /4-tray    |
| Volts(V)        | 220               |
| Temperature(°C) | 30-400            |
| Dimensions(mm)  | 1340 x 890 x 1320 |



### Gas Oven

|                 |                   |
|-----------------|-------------------|
| Model           | GR-306Q           |
| Capacity        | 3-deck /6-tray    |
| Volts(V)        | 220               |
| Temperature(°C) | 30-400            |
| Dimensions(mm)  | 1340 x 890 x 1820 |





### Rotary Oven

| Model          | GR-D16         | GR-R16         | GR-C16         |
|----------------|----------------|----------------|----------------|
| Voltage(V)     | 380V           | 220V           | 220V           |
| Power(KW)      | 36+3           | 3              | 3              |
| Specification  | 16 trays       | 16 trays       | 16 trays       |
| Dimensions(mm) | 1600×1900×2250 | 1600×1900×2250 | 1600×1900×2250 |
| Energy         | Electric       | Gas            | Diesel oil     |

### Rotary Oven

| Model          | GR-D32         | GR-R32         | GR-C32         |
|----------------|----------------|----------------|----------------|
| Voltage(V)     | 380V           | 220V           | 220V           |
| Power(KW)      | 48+3           | 3              | 3              |
| Specification  | 32 trays       | 32 trays       | 32trays        |
| Dimensions(mm) | 1800×2200×2250 | 1800×2200×2250 | 1800×2200×2250 |
| Energy         | Electric       | Gas            | Diesel oil     |



### Dough Sheeter

| Model          | GR-380B          | GR-520B           |
|----------------|------------------|-------------------|
| Power(kw)      | 0.75             | 0.75              |
| Voltage(V)     | 220-380          | 220-380           |
| Dimensions(mm) | 1630 x 730 x 640 | 2050 x 870 x 1225 |



### Convection Oven

| Model  | Energy   | Power | Voltage | Capacity | Inner Size(mm) | Dimensions(mm) |
|--------|----------|-------|---------|----------|----------------|----------------|
| GR-5D  | Electric | 7.5KW | 380V    | 5 trays  | 420×610×600    | 905×1280×955   |
| GR-5Q  | Gas      | /     | 220V    | 5 trays  | 420×610×600    | 905×1450×955   |
| GR-8D  | Electric | 15KW  | 380V    | 8 trays  | 420×610×920    | 905×1280×1280  |
| GR-8Q  | Gas      | /     | 220V    | 8 trays  | 420×610×920    | 905×1450×1280  |
| GR-10D | Electric | 15KW  | 380V    | 10 trays | 420×610×1145   | 905×1280×1520  |
| GR-10Q | Gas      | /     | 220V    | 10 trays | 420×610×1145   | 905×1450×1520  |



### Electric Plate Warmer Cart(1-Holder)

|                |                 |
|----------------|-----------------|
| Model          | PW-1S           |
| Power(kw)      | 0.4             |
| Voltage        | 220-240V/50Hz   |
| Dimensions(mm) | 500 x 450 x 980 |



### Electric Plate Warmer Cart(2-Holder)

|                |                 |
|----------------|-----------------|
| Model          | PW-2S           |
| Power(kw)      | 0.8             |
| Voltage        | 220-240V/50Hz   |
| Dimensions(mm) | 980 x 450 x 980 |



### Stainless Steel Electric Towel Warmer

|                |                 |
|----------------|-----------------|
| Model          | GR-2SWC         |
| Power(kw)      | 1.5             |
| Dimensions(mm) | 750 x 420 x 860 |



### Standing Bain Marie

| Model          | BM-401           | BM-501           |
|----------------|------------------|------------------|
| Power(kw)      | 2                | 1.5 x 2          |
| Voltage(V)     | 220              | 220              |
| Remarks        | 4 x 1/1GN        | 5 x 1/1GN        |
| Dimensions(mm) | 1500 x 700 x 800 | 1800 x 700 x 800 |



### Assembled Bain Marie with Curved Glass Shelf

| Model          | BM-402                | BM-502                |
|----------------|-----------------------|-----------------------|
| Power(kw)      | 2                     | 2                     |
| Voltage(V)     | 220                   | 220                   |
| Pan(pan)       | 4 x 1/1GN             | 5 x 1/1GN             |
| Dimensions(mm) | 1455 x 670 x (800+60) | 1790 x 670 x (800+60) |



### Electric Bain Marie with Cabinet

| Model          | BM-303       | BM-403       | BM-503       | BM-603       |
|----------------|--------------|--------------|--------------|--------------|
| Power(KW)      | 3            | 4            | 5            | 6            |
| Voltage(V)     | 220          | 220          | 220          | 220          |
| Pan            | 3x(1/1x150)  | 4x(1/1x150)  | 5x(1/1x150)  | 6x(1/1x150)  |
| Dimensions(mm) | 1120x670x800 | 1455x670x800 | 1790x670x800 | 2125x670x800 |



### Electric Bain Marie with Cabinet

| Model          | BM-304           | BM-404           | BM-504           | BM-604           |
|----------------|------------------|------------------|------------------|------------------|
| Power(KW)      | 3                | 4                | 5                | 6                |
| Voltage(V)     | 220              | 220              | 220              | 220              |
| Pan            | 3x(1/1x150)      | 4x(1/1x150)      | 5x(1/1x150)      | 6x(1/1x150)      |
| Dimensions(mm) | 1120x670x800+600 | 1455x670x800+600 | 1790x670x800+600 | 2125x670x800+600 |



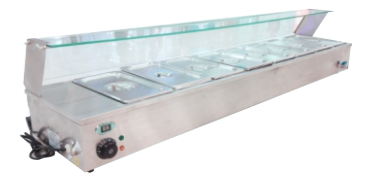
### Electric Bain-Marie (4 Compartments)

|                |              |
|----------------|--------------|
| Model          | BM-42        |
| N/W(kg)        | 18.3         |
| Power(kw)      | 2            |
| Pan            | 4x1/2Pan     |
| Pan Size(mm)   | 325x265x100  |
| Dimensions(mm) | 1220x365x330 |



### Electric Bain-Marie(6 Compartments)

|                |              |
|----------------|--------------|
| Model          | BM-63        |
| N/W(kg)        | 18.3         |
| Power(kw)      | 2            |
| Pan            | 6x1/3Pan     |
| Pan Size(mm)   | 325x176x100  |
| Dimensions(mm) | 1220x365x330 |



### Electric Bain-Marie (8 Compartments)

|                |                         |
|----------------|-------------------------|
| Model          | BM-83                   |
| N/W(kg)        | 21.9                    |
| Power(kw)      | 2                       |
| Pan            | 6x1/3Pan                |
| Pan Size(mm)   | 325x265x100+265x162x100 |
| Dimensions(mm) | 1490x365x330            |





**Stainless Steel Working Table (round tube)**

| Model   | Dimensions(mm)   |
|---------|------------------|
| WT-R212 | 1200 x 700 x 850 |
| WT-R215 | 1500 x 700 x 850 |
| WT-R218 | 1800 x 700 x 850 |



**Stainless Steel Working Table with Back (round tube)**

| Model    | Dimensions(mm)   |
|----------|------------------|
| WT-R212B | 1200 x 700 x 850 |
| WT-R215B | 1500 x 700 x 850 |
| WT-R218B | 1800 x 700 x 850 |



**Stainless Steel Working Table with Wheels**

| Model    | Dimensions(mm)   |
|----------|------------------|
| WT-R215W | 1500 x 800 x 800 |
| WT-R218W | 1800 x 800 x 800 |



**Stainless Steel Working Table (square tube)**

| Model   | Dimensions(mm)   |
|---------|------------------|
| WT-S212 | 1200 x 700 x 850 |
| WT-S215 | 1500 x 700 x 850 |
| WT-S218 | 1800 x 700 x 850 |



**Stainless Steel Working Table with Back (square tube)**

| Model    | Dimensions(mm)   |
|----------|------------------|
| WT-S212B | 1200 x 700 x 850 |
| WT-S215B | 1500 x 700 x 850 |
| WT-S218B | 1800 x 700 x 850 |



**Stainless Steel 3-layer Table**

| Model   | Dimensions(mm)   |
|---------|------------------|
| WT-R312 | 1200 x 700 x 850 |
| WT-R315 | 1500 x 700 x 850 |
| WT-R318 | 1800 x 700 x 850 |



**4-layer Stainless Steel Shelf (ladder type)**

| Model    | Dimensions(mm)    |
|----------|-------------------|
| RKS-1115 | 1100 x 500 x 1550 |
| RKS-1515 | 1500 x 500 x 1550 |
| RKS-1815 | 1800 x 500 x 1550 |



**4-layer Stainless Steel Shelf (solid board type)**

| Model    | Dimensions(mm)    |
|----------|-------------------|
| BKS-1215 | 1200 x 500 x 1550 |
| BKS-1515 | 1500 x 500 x 1550 |
| BKS-1815 | 1800 x 500 x 1550 |



**Stainless Steel Working Table with Upper Shelf**

| Model    | Dimensions(mm)       |
|----------|----------------------|
| GR-TRP12 | 1200 x 700 x 850+660 |
| GR-TRP15 | 1500 x 700 x 850+660 |
| GR-TRP18 | 1800 x 700 x 850+660 |



**Stainless Steel 3-layer Trolley (Square Tube)**

| Model  | Dimensions(mm)  | Note        |
|--------|-----------------|-------------|
| ST-301 | 750 x 400 x 835 | Small       |
| ST-302 | 850 x 450 x 900 | Medium      |
| ST-303 | 950 x 500 x 950 | Large       |
| ST-304 | 950 x 620 x 950 | Extra Large |



**Stainless Steel Dish Collecting Trolley**

| Model  | Dimensions(mm)  | Note   |
|--------|-----------------|--------|
| ST-211 | 750 x 400 x 835 | Small  |
| ST-212 | 850 x 450 x 900 | Medium |
| ST-213 | 950 x 500 x 950 | Large  |



**Stainless Steel Liquor Trolley**

| Model  | Dimensions(mm)  | Note   |
|--------|-----------------|--------|
| ST-221 | 750 x 400 x 835 | Small  |
| ST-222 | 850 x 450 x 900 | Medium |
| ST-223 | 950 x 500 x 950 | Large  |



**Stainless Steel 3-layers Dining Cart (round tube)**

| Model   | Dimensions(mm)  | Note   |
|---------|-----------------|--------|
| ST-R301 | 760 x 380 x 760 | Small  |
| ST-R302 | 810 x 460 x 850 | Medium |
| ST-R303 | 860 x 540 x 940 | Large  |



Collision Prevention

**Stainless Steel 2-layer Trolley (square tube)**

| Model  | Dimensions(mm)  | Note   |
|--------|-----------------|--------|
| ST-201 | 750 x 400 x 835 | Small  |
| ST-202 | 850 x 450 x 900 | Medium |
| ST-203 | 950 x 500 x 950 | Large  |



**Stainless Steel Seasoning Trolley**

| Model  | Dimensions(mm)  | Note  |
|--------|-----------------|-------|
| ST-231 | 750 x 400 x 835 | Small |
| ST-232 | 850 x 450 x 900 | Large |



**Stainless Steel Dish Collecting Trolley**

| Model | Dimensions(mm)  | Note  |
|-------|-----------------|-------|
| ST-3P | 900 x 460 x 950 | RTC-5 |



**3-layer Plastic Trolley**

| Model   | Dimensions(mm)   | Note  |
|---------|------------------|-------|
| ST-C100 | 830 x 420 x 970  | Small |
| ST-C500 | 1070 x 500 x 990 | Large |



**3-layer Plastic Trolley**

| Model  | Dimensions(mm)   |
|--------|------------------|
| ST-C04 | 1395 x 524 x 940 |



**Stainless Steel European Style Wall Stand**

| Model | Dimensions(mm) |
|-------|----------------|
| R-H06 | 600 x 355      |
| R-H12 | 1200 x 355     |
| R-H18 | 1800 x 255     |



**Stainless Steel Platform Pushing Trolley**

| Model | Dimensions(mm)   | Note         |
|-------|------------------|--------------|
| C-101 | 1000 x 600 x 870 | Normal shape |
| C-104 | 1000 x 600 x 870 | EMP shape    |



**Stainless Steel Platform Pushing Trolley**

| Model | Dimensions(mm)  | Note              |
|-------|-----------------|-------------------|
| C-10  | 740 x 480 x 870 | Standard Shape    |
| C-11  | 900 x 600 x 900 | Extra Large Shape |





**Stainless Steel Single Sink**

| Model  | Dimensions(mm)  | Note   |
|--------|-----------------|--------|
| SK-106 | 700 x 700 x 850 | 1 Bowl |



**Stainless Steel Single Sink with Table**

| Model   | Dimensions(mm)   | Sink Size       |
|---------|------------------|-----------------|
| SK-112A | 1200 x 700 x 850 | 500 x 500 x 280 |



**Stainless Steel Single Sink Big Bowl**

| Model  | Dimensions(mm)   | Note     |
|--------|------------------|----------|
| SK-112 | 1200 x 700 x 850 | Pot Wash |



**Stainless Steel Double Sink**

| Model  | Dimensions(mm)   | Sink Size       |
|--------|------------------|-----------------|
| SK-212 | 1400 x 700 x 850 | 600 x 500 x 280 |



**Stainless Steel Triple Sink**

| Model  | Dimensions(mm)   | Note    |
|--------|------------------|---------|
| SK-318 | 1800 x 700 x 850 | 3 Bowls |



**Stainless Steel Sink with Cupboards**

| Model   | Dimensions(mm)   | Note        |
|---------|------------------|-------------|
| SKB-214 | 1400 x 700 x 850 | Table Right |



**Stainless Steel Hand Sink With Knee-Operated**

| Model  | Dimensions(mm)  |
|--------|-----------------|
| SK-601 | 400 x 335 x 561 |



**Stainless Steel Basin**

| Model   | Dimensions(mm)  |
|---------|-----------------|
| SK-602  | 400 x 400 x 345 |
| SK-602A | 510 x 700 x 850 |



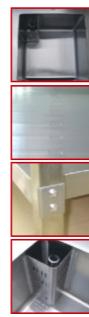
**Work Table with Wooden Chopping Board**

| Model    | Dimensions(mm)        |
|----------|-----------------------|
| GR-WT150 | 1500 x 800 x 700+100  |
| GR-WT180 | 1800 x 800 x 700+100  |
| GR-WT200 | 2000 x 1000 x 700+100 |



**Double Sink with Table**

| Model  | Dimensions(mm)   | Note        |
|--------|------------------|-------------|
| SK-218 | 1800 x 700 x 850 | Table Right |



**8" Center Wall Mounted Faucet**  
Model: TAP-800A

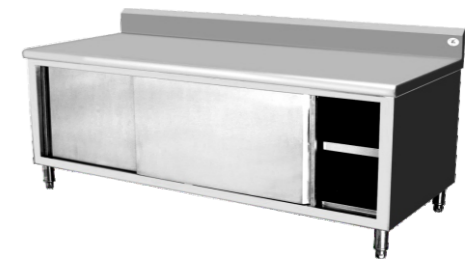


**4" Deck Mounted Faucet**  
Model: TAP-800



**Working Cabinet**

| Model    | Dimensions(mm)   | Note          |
|----------|------------------|---------------|
| WCB-1501 | 1500 x 700 x 850 | No Backsplash |
| WCB-1801 | 1800 x 700 x 850 | No Backsplash |
| WCB-2001 | 2000 x 700 x 850 | No Backsplash |



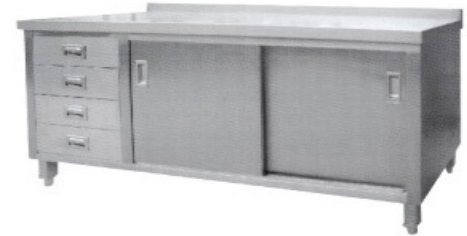
**Working Cabinet With Back**

| Model     | Dimensions(mm)   | Note            |
|-----------|------------------|-----------------|
| WCB-1501B | 1500 x 700 x 950 | With Backsplash |
| WCB-1801B | 1800 x 700 x 950 | With Backsplash |
| WCB-2001B | 2000 x 700 x 950 | With Backsplash |



**Working Cabinet with Drawers**

| Model    | Dimensions(mm)       | Note               |
|----------|----------------------|--------------------|
| WCB-1531 | 1500 x 700 x 850/950 | With/No Backsplash |
| WCB-1831 | 1800 x 700 x 850/950 | With/No Backsplash |
| WCB-2031 | 2000 x 700 x 850/950 | With/No Backsplash |



**Working Cabinet with Drawers**

| Model     | Dimensions(mm)       | Note               |
|-----------|----------------------|--------------------|
| WCB-1541B | 1500 x 700 x 850/950 | With/No Backsplash |
| WCB-1841B | 1800 x 700 x 850/950 | With/No Backsplash |



**Working Table With Drawers**

| Model   | Dimensions(mm)   | Note       |
|---------|------------------|------------|
| WT-1531 | 1500 x 700 x 800 | Knock-down |



**Wall Hanging Cabinet**

| Model  | Dimensions(mm)   |
|--------|------------------|
| HCB-10 | 1000 x 400 x 650 |
| HCB-12 | 1200 x 400 x 650 |
| HCB-15 | 1500 x 400 x 650 |



**Stainless Steel Hood**

| Model | Dimensions(mm) |
|-------|----------------|
| HD-24 | L x 2400 x 600 |



**Stainless Steel Hood**

| Model | Dimensions(mm) |
|-------|----------------|
| HD-11 | L x 1100 x 500 |





SIZA  
0.75M

### Commercial Kitchen Range Hood

|                            |                                     |
|----------------------------|-------------------------------------|
| Model                      | EXT-T75C                            |
| Motor                      | 36# Fully Enclosed All Copper Motor |
| Electrophoresis Wind Wheel | Φ280 x 150                          |
| Air Volume                 | 23m <sup>3</sup> /min               |
| Output Decibels            | 65dB(A)                             |
| Body Size(mm)              | 750 x 750 x 550                     |



Stainless Steel 304#



LED Light



Strong Wind Pressure



Electrophoresis Wind Wheel

### Commercial Kitchen Range Hood

|                            |                                     |
|----------------------------|-------------------------------------|
| Model                      | EXT-T15C                            |
| Motor                      | 36# Fully Enclosed All Copper Motor |
| Electrophoresis Wind Wheel | Φ280 x 150                          |
| Air Volume                 | 23m <sup>3</sup> /min               |
| Output Decibels            | 65dB(A)                             |
| Body Size(mm)              | 1500 x 750 x 550                    |



SIZA  
1.5M

- LED Touch Sensing
- Smart Gesture Sensing
- Easy To Clean Tempered Glass
- Level 3 Wind Speed
- Strong Wind Pressure
- Pure Copper Motor
- Stainless Steel 304# Body



SIZA  
1.8M

### Commercial Kitchen Range Hood(1/2)

|                            |                                     |   |
|----------------------------|-------------------------------------|---|
| Model                      | EXT-T18C                            | EXT-T18C-2                              |
| Motor                      | 36# Fully Enclosed All Copper Motor | 2 x 36# Fully Enclosed All Copper Motor |
| Electrophoresis Wind Wheel | Φ280 x 150                          | 2 x Φ280 x 150                          |
| Air Volume                 | 23m <sup>3</sup> /min               | 46m <sup>3</sup> /min                   |
| Output Decibels            | 65dB(A)                             | 130dB(A)                                |
| Body Size(mm)              | 1800 x 750 x 550                    | 1800 x 750 x 550                        |



### Kitchen Range Hood

|                 |                                     |
|-----------------|-------------------------------------|
| Model           | EXT-102T                            |
| Motor           | 32# Fully Enclosed All Copper Motor |
| N/W(kg)         | 23                                  |
| Air Volume      | 18m <sup>3</sup> /min               |
| Output Decibels | 70dB(A)                             |
| Body Size(mm)   | 895x520x650                         |

- LED Touch Sensing
- Smart Gesture Sensing
- Easy To Clean Tempered Glass
- Strong Wind Pressure
- Pure Copper Motor
- Stainless Steel 304# Body



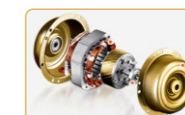
### Kitchen Range Hood

|                 |                                     |
|-----------------|-------------------------------------|
| Model           | EXT-101T                            |
| Motor           | 32# Fully Enclosed All Copper Motor |
| N/W(kg)         | 21                                  |
| Air Volume      | 18m <sup>3</sup> /min               |
| Output Decibels | 70dB(A)                             |
| Body Size(mm)   | 895x520x650                         |



### Kitchen Range Hood

|                 |                                     |
|-----------------|-------------------------------------|
| Model           | EXT-895B                            |
| Motor           | 32# Fully Enclosed All Copper Motor |
| N/W(kg)         | 20                                  |
| Air Volume      | 18m <sup>3</sup> /min               |
| Output Decibels | 70dB(A)                             |
| Body Size(mm)   | 895x520x650                         |



High Power Motor



LED Light



Fashion Display



Stainless Steel 304#



### Kitchen Range Hood

|                 |                                     |
|-----------------|-------------------------------------|
| Model           | EXT-28ARC                           |
| Motor           | 28# Fully Enclosed All Copper Motor |
| N/W(kg)         | 14                                  |
| Air Volume      | 15m <sup>3</sup> /min               |
| Output Decibels | 56dB(A)                             |
| Body Size(mm)   | 890x480x560                         |





### Sauce Dispenser

|                |         |                 |         |
|----------------|---------|-----------------|---------|
| Model          | MD-201S | 185 x 290 x 255 | Singles |
| Dimensions(mm) | MD-202S | 364 x 186 x 225 | Double  |
| Note           | MD-203S | 544 x 186 x 225 | Triple  |



### Chips Cutter 4-Blades

|                |                 |
|----------------|-----------------|
| Model          | CS-03TT         |
| Dimensions(mm) | 350 x 260 x 330 |



### Long Chips Cutter

|                |              |
|----------------|--------------|
| Model          | CS-04FT      |
| N/W(kg)        | 5            |
| Dimensions(mm) | 21 x 21 x 48 |



### Manual Potato Twister

|                |                 |
|----------------|-----------------|
| Model          | PS-501          |
| N/W(kg)        | 1.5             |
| Dimensions(mm) | 250 x 250 x 405 |



### Electric Pasta Maker

|                |                 |
|----------------|-----------------|
| Model          | R-10            |
| N/W(kg)        | 9               |
| Power(W)       | 135             |
| Dimensions(mm) | 328 x 286 x 253 |



### Electric Pasta Maker

|                |                 |
|----------------|-----------------|
| Model          | R-200A          |
| N/W(kg)        | 23              |
| Power(W)       | 750             |
| Dimensions(mm) | 392 x 325 x 395 |



### Electric Potato Slicer

|                |                   |
|----------------|-------------------|
| Model          | PS-501A           |
| N/W(kg)        | 5.0               |
| Dimensions(mm) | 470 x 200 x 210mm |



### Electric Water Heater

|                |           |           |           |
|----------------|-----------|-----------|-----------|
| Model          | WB-08L    | WB-16L    | WB-30L    |
| Power(W)       | 1500      | 1500      | 2500      |
| Volts          | 220V/240V | 220V/240V | 220V/240V |
| Capacity(L)    | 8         | 16        | 30        |
| Dimensions(mm) | 250 x 405 | 310 x 465 | 350 x 525 |



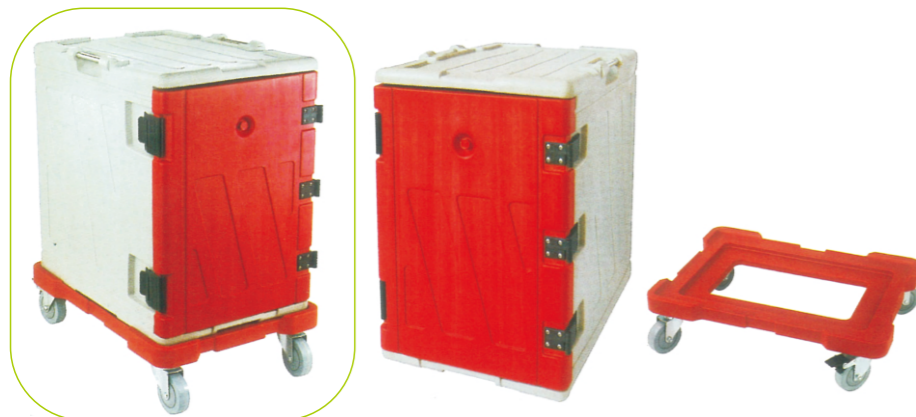
### Water Boiler

|                |                  |
|----------------|------------------|
| Model          | WB-80A           |
| Power(kw)      | 12               |
| Volts          | 380V/50Hz        |
| Capacity(L)    | 80               |
| Dimensions(mm) | 530 x 415 x 1040 |



### Water Boiler

|                |                 |
|----------------|-----------------|
| Model          | WB-40A          |
| Power(kw)      | 6               |
| Volts          | 380V/50Hz       |
| Capacity(L)    | 40              |
| Dimensions(mm) | 455 x 405 x 735 |



### Food Warmer with Trolley

|         |                                     |
|---------|-------------------------------------|
| Model   | WP-100L(07)                         |
| Storage | 3 1/1 Food Pan 6 1/2 Food Pan       |
|         | 9 1/3 Food Pan                      |
|         | 40 pcs Standard Lunch Box           |
| Weight  | 20kg                                |
| Size    | 650 x 440 x 650mm                   |
| Purpose | From Kitchen Center to Sharing Site |

# Refrigeration Equipment

